

REFRIGERATED PIZZA TABLES

OPTR

PROJECT _____

ITEM _____



OPTR-72SC

**MODELS
OPTR**



DESCRIPTION

- Refrigerated air curtain type pizza table, with compressor (model SC) or without (model R), which meets NSF-7 food preservation standards.
- Stainless steel doors.
- Painted steel back and sides.
- 1 3/4" (45mm) thick laminated maple wood top.
- Polyurethane insulated doors with magnetic gaskets.
- Anodized aluminum interior and stainless steel floor.
- Tubular steel legs with adjustable bullet feet.
- Built-in hermetically sealed compressor with easy access blower coil.
- Tilted condiment rail with 12" (305 mm) opening, including 1/3 and 1/2 size containers.
- Temperature range from 32°F to 41°F (0°C to 5°C).
- One adjustable epoxy coated wire shelf or one set of 4 removable angle slides per door. (See chart for details).
- Automatic interior light.

OPTIONS

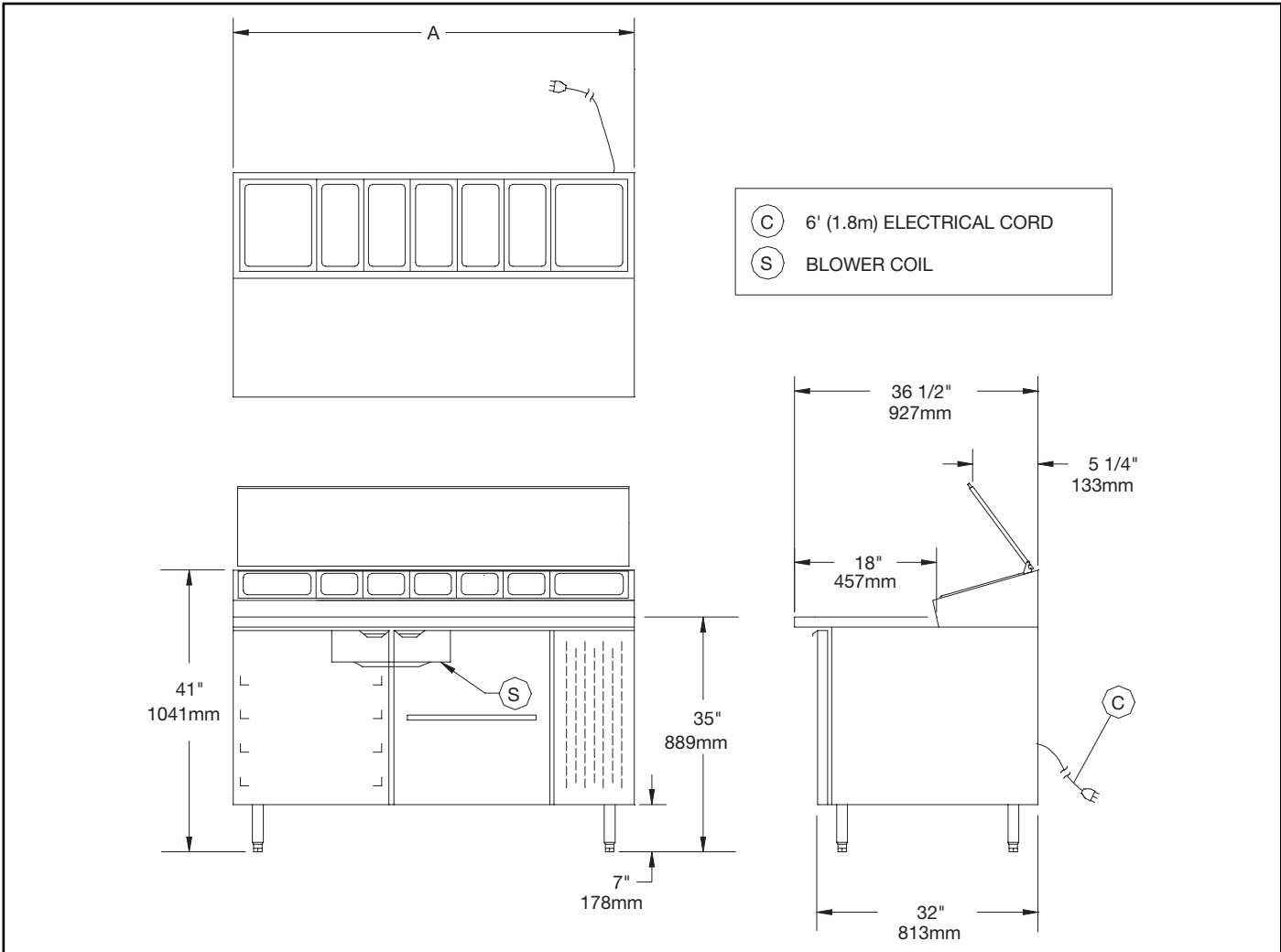
- Stainless steel top, sides, back, legs and interior.
- Extra shelves.
- Extra sets of angles.
- Door locks.
- Removable white polyethylene top.
- Electric evaporator pan.

M.K.E. Industries (1984) Inc.

183 Montcalm Blvd. N. Candiac Qc J5R 3L6 Tel: (450) 659-6531 / 1-800-361-9801 / Fax: (450) 659-2248

www.mke-ind.com

10/02



SELF-CONTAINED COMPRESSOR											
Model	Length A	Depth	Height	Doors+ angles	Doors+ shelf	Inside Volume	Voltage	Current (Amps)	Compressor	Volume	Weight
OPTR-48SC	48" 1219 mm	36 1/2" 927 mm	35" 889 mm	1 of 24" 610 mm	1 of 24" 610 mm	11 ft ³ 312 L	115 V	6.2	1/4 HP	89.3 ft ³ 2.53 m ³	475 lbs. 216 kg
OPTR-60SC	60" 1524 mm	36 1/2" 927 mm	35" 889 mm	1 of 24" 610 mm	1 of 24" 610 mm	15 ft ³ 425 L	115 V	8.1	1/3 HP	107.1 ft ³ 3.03 m ³	500 lbs. 227 kg
OPTR-72SC	72" 1828 mm	36 1/2" 927 mm	35" 889 mm	1 of 24" 610 mm	2 of 18" 457 mm	19.3 ft ³ 547 L	115 V	8.1	1/3 HP	125.0 ft ³ 3.54 m ³	550 lbs. 250 kg
OPTR-88SC	88" 2235 mm	36 1/2" 927 mm	35" 889 mm	2 of 24" 610 mm	1 of 24" 610 mm	24.7 ft ³ 700 L	115 V	8.1	1/3 HP	148.8 ft ³ 4.21 m ³	635 lbs. 288 kg
OPTR-100SC	100" 2540 mm	36 1/2" 927 mm	35" 889 mm	2 of 24" 610 mm	2 of 18" 457 mm	27.3 ft ³ 773 L	115 V	8.1	1/3 HP	166.6 ft ³ 4.72 m ³	765 lbs. 347 kg
OPTR-112SC	112" 2845 mm	36 1/2" 927 mm	35" 889 mm	2 of 24" 610 mm	2 of 24" 610 mm	31.6 ft ³ 894 L	115 V	10.8	1/2 HP	184.5 ft ³ 5.22 m ³	865 lbs. 393 kg

* Specifications may change without notice due to continuous product improvement

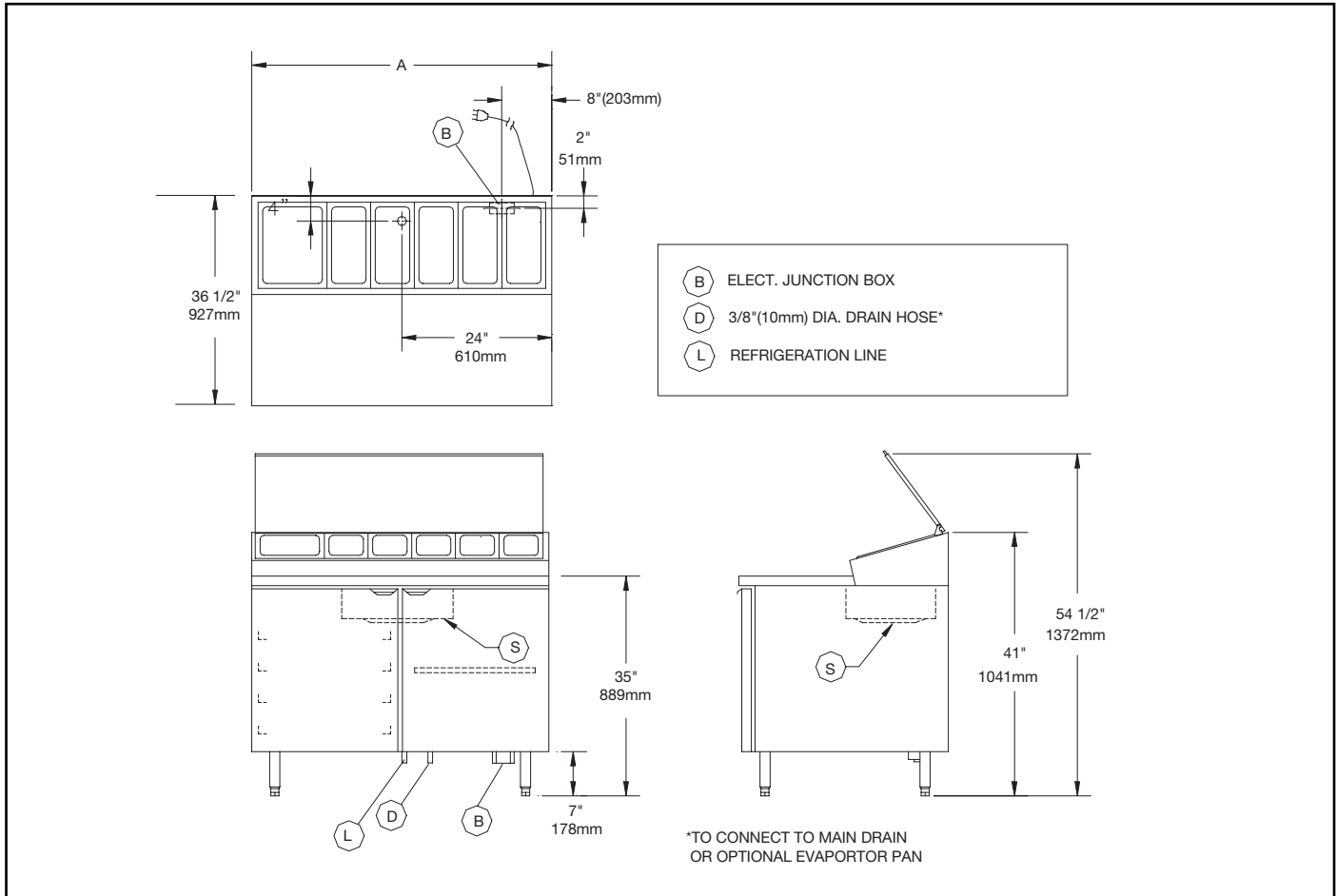
M.K.E. Industries (1984) Inc.

183 Montcalm Blvd. N. Candiac Qc J5R 3L6 Tel: (450) 659-6531 / 1-800-361-9801 / Fax: (450) 659-2248

www.mke-ind.com

REFRIGERATED PIZZA TABLES

OPTR-R



REMOTE COMPRESSOR											
Model	Length A	Depth	Height	Doors+ angles	Doors+ shelf	Inside Volume	Voltage	Current (Amps)	Compressor	Volume	Weight
OPTR-48R	48" 1219 mm	36 1/2" 927 mm	35" 889 mm	1 of 24" 610 mm	1 of 24" 610 mm	15 ft ³ 425 L	115 V	2.3	-	89.3 ft ³ 2.53 m ³	450 lbs. 205 kg
OPTR-60R	60" 1524 mm	36 1/2" 927 mm	35" 889 mm	1 of 24" 610 mm	2 of 18" 457 mm	19.3 ft ³ 547 L	115 V	2.3	-	107.1 ft ³ 3.03 m ³	475 lbs. 216 kg
OPTR-72R	72" 1828 mm	36 1/2" 927 mm	35" 889 mm	1 of 24" 610 mm	2 of 24" 610 mm	23.4 ft ³ 663 L	115 V	2.3	-	125.0 ft ³ 3.54 m ³	525 lbs. 240 kg
OPTR-84R	84" 2134 mm	36 1/2" 927 mm	35" 889 mm	2 of 24" 610 mm	2 of 18" 457 mm	26 ft ³ 736 L	115 V	2.3	-	142.8 ft ³ 4.04 m ³	570 lbs. 259 kg
OPTR-96R	96" 2438 mm	36 1/2" 927 mm	35" 889 mm	2 of 24" 610 mm	2 of 24" 610 mm	30.3 ft ³ 858 L	115 V	2.3	-	160.7 ft ³ 4.54 m ³	675 lbs. 307 kg

* Specifications may change without notice due to continuous product improvement

M.K.E. Industries (1984) Inc.

183 Montcalm Blvd. N. Candiac Qc J5R 3L6 Tel: (450) 659-6531 / 1-800-361-9801 / Fax: (450) 659-2248

www.mke-ind.com